

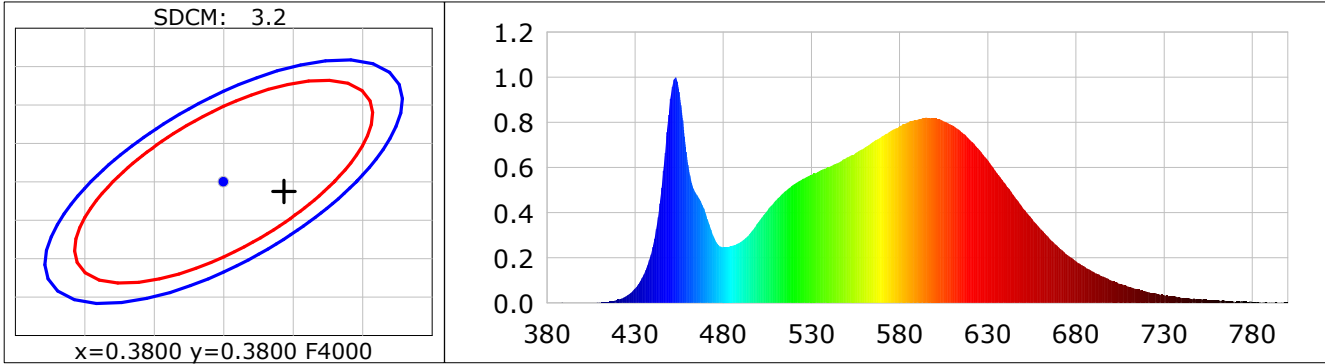
Lightsource Test Report

Product Infomation

Product Category: LED STRIP	Product Type: LED STRIP
Product Spec: THER 2	Product Number: 252
Manufacturer: TECSOLEED S.L.	Buyer: TECSOLEED S.L.

CIE Colorimetric Parameters

Chromaticity coordinates: $x=0.3844$ $y=0.3787$ $u(u')=0.2269$ $v=0.3354$ $v'=0.5030$
 CCT: $T_c=3910K$ ($duv=-0.00019$) Color Ratio: $R=0.188$ $G=0.776$ $B=0.037$
 Peak Wavelength: 452.8nm Half Bandwidth: 18.7nm
 Dominant Wavelength: 579.5nm Color Purity: 0.290
 CRI: $R_a=83.4$, $avgR(1\sim14)=76.9$, $avgR(1\sim15)=76.9$ TM30: $R_f=83$, $R_g=95$
 GAI: $GAI_BB_8=92.3$, $GAI_BB_15=100.0$, $GAI_EES=71.4$
 R1 =82 R2 =91 R3 =96 R4 =81 R5 =82 R6 =87 R7 =85 R8 =64
 R9 =10 R10=77 R11=80 R12=60 R13=84 R14=98 R15=76
 Color Quality Scale: $Q_a=82.6$, $Q_f=82.8$, $Q_p=82.3$, $Q_g=92.3$
 Q1 =82 Q2 =98 Q3 =79 Q4 =75 Q5 =80 Q6 =83 Q7 =85 Q8 =89
 Q9 =98 Q10=90 Q11=86 Q12=84 Q13=84 Q14=73 Q15=76



Photometric Parameters

Luminous Flux: 1649.0 lm Efficiency: 159.73 lm/W Radiant Power: 4.969 W
 Total mains efficacy: 147.91 lm/W Energy Efficiency Class: D (EU 2019/2015)

Electric Parameters

Voltage: 24.000V Current: 0.4302A Power: 10.32W
 Power Factor: 1.0000 Frequency: 0.00Hz

Test Infomation

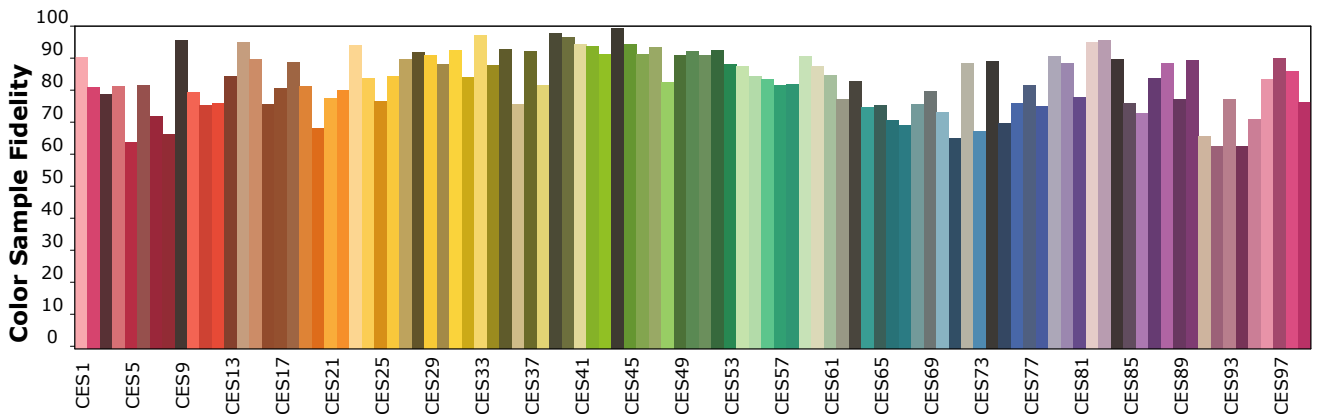
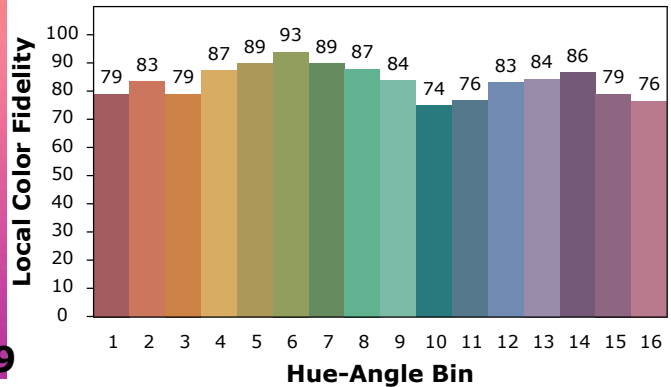
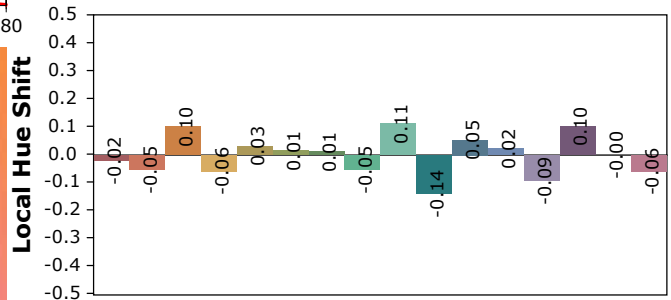
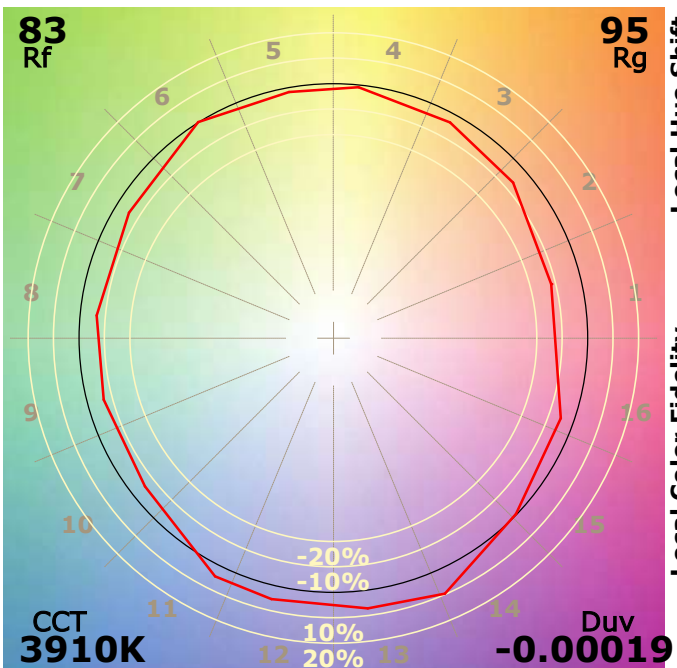
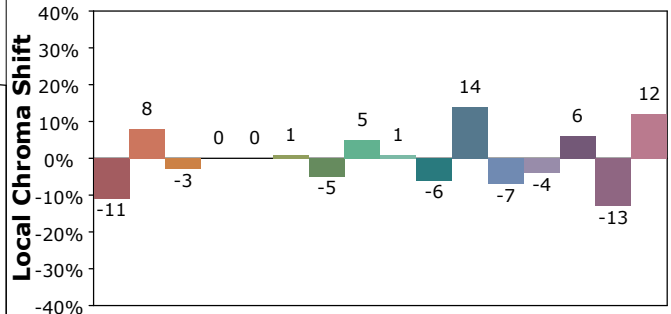
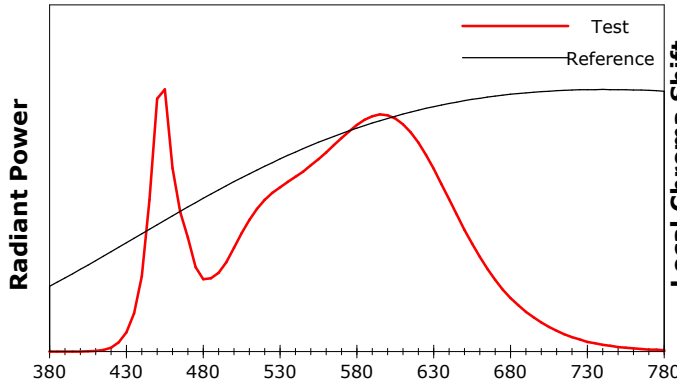
Scan Range: 380~800:1nm Photometric Method: sphere-spectroradiometer
 Stabilization Time: 0 Sec ALC.: 1.0000 Photometric Condition: Sphere diameter: 1.50m, 4PI
 Max of Signal: 46218 (2292) CCD Integration Time: 321.91 ms

IES TM-30-18 Color Rendition Report

Product Information

Product Category: LED STRIP
 Product Spec: 21059602440535
 Manufacturer: TECSOLED S.L.

Product Type: LED STRIP
 Product Number: 252
 Buyer: TECSOLED S.L.



Condition: Tx:22.1'C, Ti:19.8'C, R.H.:60%
 Test Lab: TECSOLED S.L.
 Operator: JORDAN GIL DIAZ

Test Device: Inventfine CMS-2S (Plus)
 Test Time: 2021-10-28 14:12:56
 Inspector: